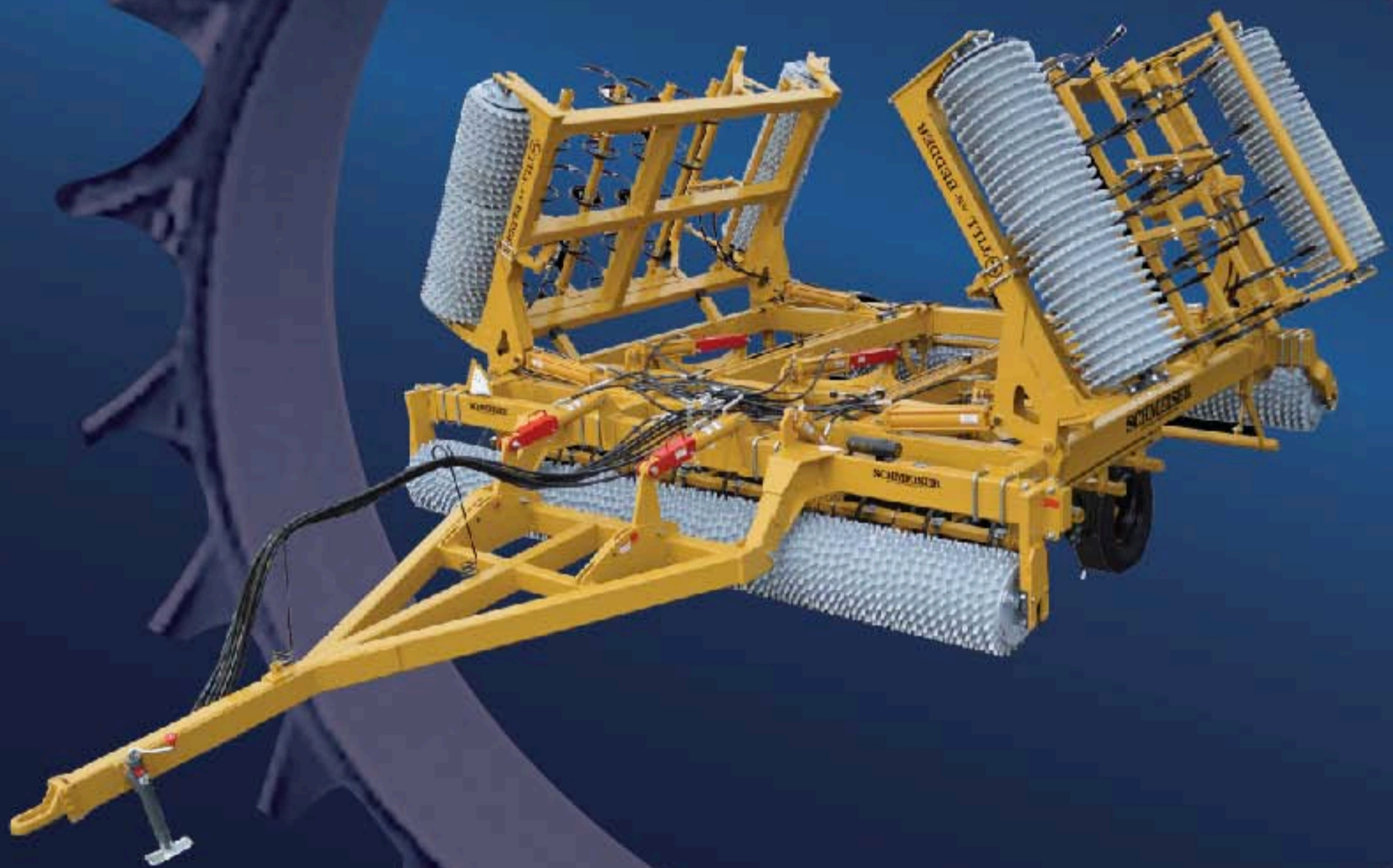


# TILL AN' BEDDER™

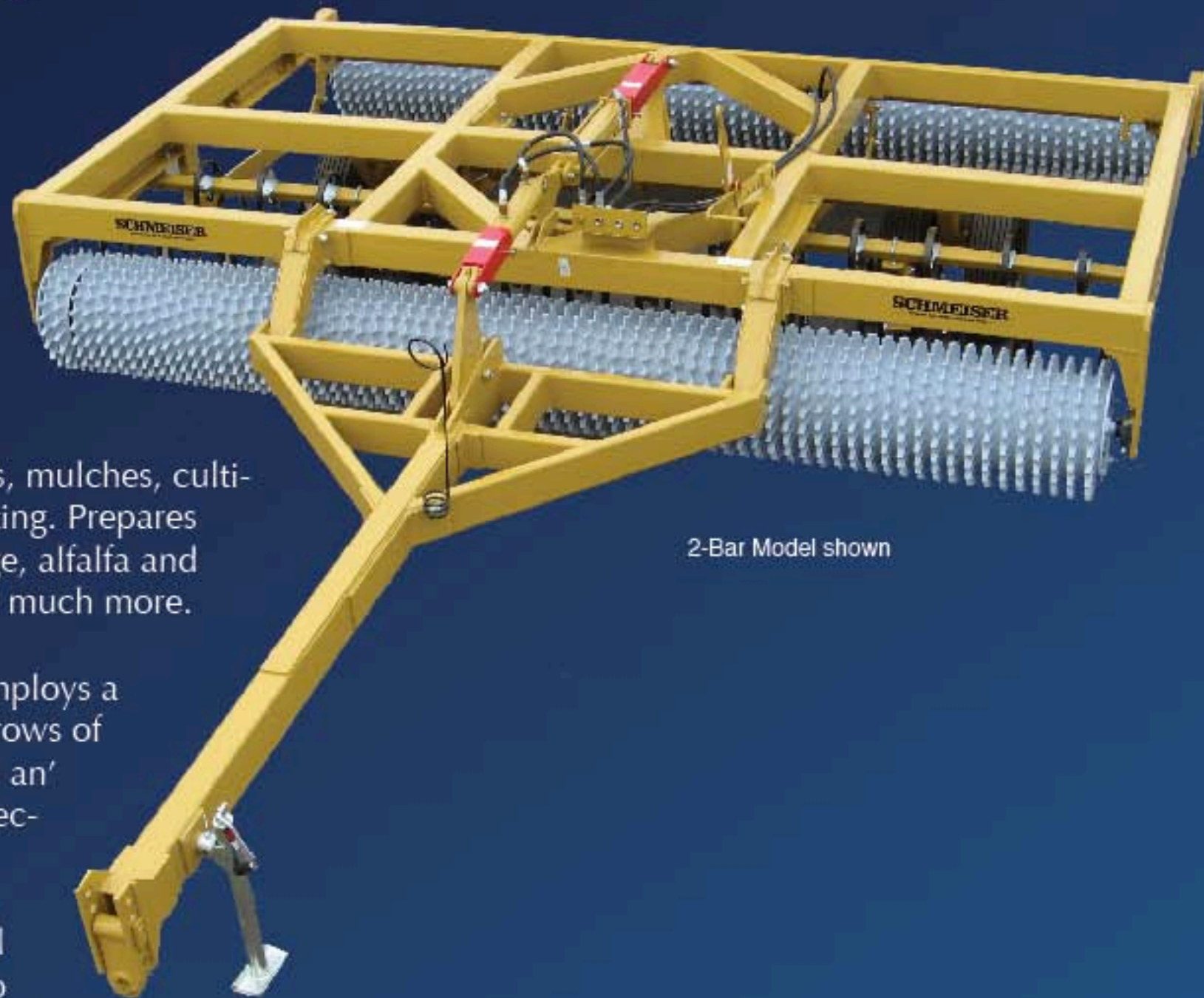
The Solution for Perfect Seed Beds



**T.G. SCHMEISER®**

# SCHMEISER® TILL AN' BEDDER .....

**TILL AN' BEDDER - THE COMPLETE TOOL THAT PREPARES YOUR SOIL PERFECTLY FOR SEEDING.**



2-Bar Model shown

The once over operation that tills, mulches, cultivates, and firms the soil for planting. Prepares the ideal seed bed for corn, silage, alfalfa and grains, potatoes, sugar beets and much more.

The Schmeiser Till an' Bedder employs a front Till an' Pak™ roller, 2 or 4 rows of S-Tines, leveling bar and rear Till an' Pak roller to provide a highly effective combination for superior results. Completely mobile with in-cab hydraulic controls, the Till an' Bedder is available in 12ft. to 30ft. widths with a choice of tubes and rings to fit your individual crop requirements.

The front Till an' Pak ring roller breaks up and crushes large, primary clods. High clearance heavy-duty S-Tines bring up sub-surface clods – eliminating costly wheel and soil compaction. The hydraulic leveling bar knocks ridges left by the S-Tines and spreads soil evenly. The rear Till an' Pak ring roller breaks up remaining clods, firms the soil, smoothes, “pocks” the soil to reduce water evaporation and wind erosion, and leaves the ground ready for planting.

The Till an' Bedder leaves the soil firm and smooth for uniform germination and comfort for multi-pass crops, such as alfalfa. Incorporate chemicals at the same time or hook up a drill behind and save on passes, time and money.





Folding 4-Bar Model shown with lead hoses

### HYDRAULIC FOLDING TILL AN' BEDDER

The Folding Till an' Bedder is the ultimate seed bed machine. Designed for maximum mobility, the Schmeiser Folding Till an' Bedder provides expanded working widths up to 30ft., and folds up for easy transport. Operator controlled from the tractor seat for convenience and safety, the Folding Till an' Bedder incorporates an unique counter balance valve and flow divider mechanism to ensure uniform motion of the wings.

### 2 BAR AND 4 BAR TILL AN' BEDDERS

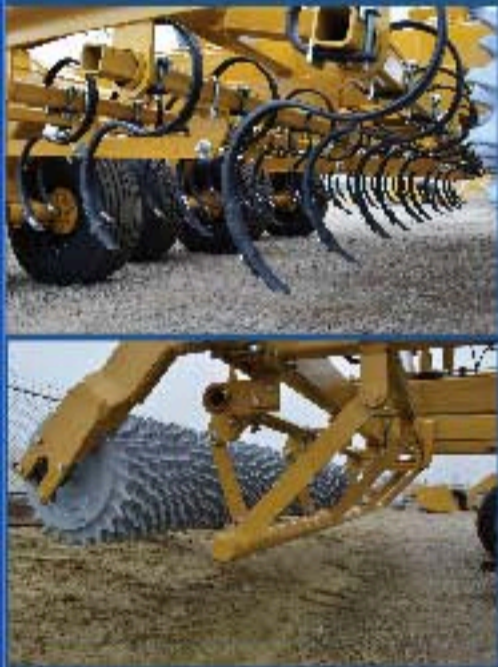
Both styles of Till an' Bedders feature heavy wall main frame construction, heavy-duty S-Tines, hydraulic transport, hydraulic leveling bar and genuine Schmeiser packer rings.

2 Bar units have two row of staggered S-Tines with an overall spacing of 6" apart. This is ideal for making seed beds in clean ground (without trash).

4 Bar machines have four rows of S-Tines with an overall spacing of 4" apart. The spacing on the S-Tines is designed so that the trash will flow through the Till an' Bedder and reduce the chance of plugging.



4-Bar Model shown



### HEAVY DUTY S-TINES

All units come standard with Danish style S-Tines. S-Tines will outperform old fashion loop "C" shanks by vibrating more vigorously front and back and side to side. These S-Tines are made of the highest quality spring steel material. S-Tines are 1/2" thick by 1-1/4" wide – much heavier than the industry standard. 1" reversible shovels are standard; other sweeps, points or shovels may be used.

### HYDRAULIC LEVELING BAR

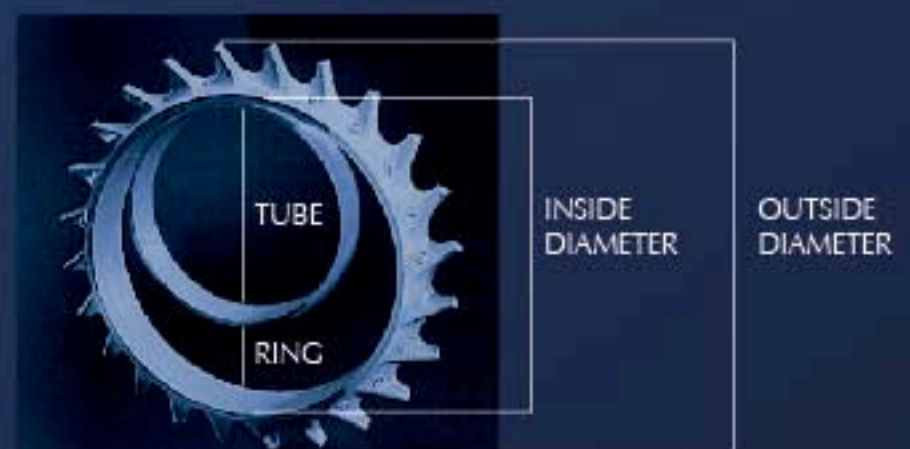
The hydraulic leveling bar is standard on all units. This bar, located in the front of the rear roller, will knock down ridges left by the S-Tines, leaving the soil firm and smooth. A hydraulic cylinder adjusts the up and down movement of the leveling bar; control is always at your fingertips. Depth Control Indicator is standard.

### RINGS

With a ratio of five rings per foot of width, Schmeiser rings feature curved teeth to tackle the toughest soil conditions. Engineered to aggressively till one direction or provide firm packing in the opposite direction.

### TUBES

Schmeiser tubes are made of API pipe and are available in 10" and 12" diameters. For additional weight, these tubes feature integrated plugs that allow the pipe to be filled with water.



# TILL AN' BEDDER OPTIONS

- **Optional 1' Wide Rear Roller - Helps eliminate ridge left by outside S-Tines or Leveling Bar**
- **Rear Trail Hitch**
  - TB4-Q 2 Bar and 4 Bar Models
  - FTB-RTH Folding Models
- **Hydraulic S-Tine Adjustment (Replaces manual adjustment)**
  - TB2-HYDST 2 Bar Models
  - TB4-HYDST 4 Bar Models
  - FTB-HYDST Folding Models (uses series cylinders)
- **Front Split Roller**

Changes single front roller assembly into two (2) front rollers with a bearing hanger in the middle. Helps reduce bearing stress and soil push on the front roller assembly. Available on wider 2 Bar and 4 Bar non-folding models (16ft. to 24ft.).

## 2-BAR MODEL

Width	Tube Ring Size	Weight Lbs.	Number of S-Tines
12 ft.	10-12/16	5763	23
	10-12/17	6723	23
	10-13/17	6100	23
	12-14/20	7700	23
14 ft.	10-12/16	6422	27
	10-12/17	7542	27
	10-13/17	6814	27
16 ft.	12-14/20	8690	27
	10-12/16	7081	31
	10-12/17	8494	31
18 ft.	10-13/17	7529	31
	12-14/20	9673	31
	10-12/16	7740	35
	10-12/17	9446	35
20 ft.	10-13/17	8244	35
	12-14/20	10720	35
	10-12/16	8900	39
20 ft.	10-12/17	10300	39
	10-13/17	9500	39
	12-14/20	12500	39

## 4-BAR MODEL

Width	Tube Ring Size	Weight Lbs.	Number of S-Tines
12 ft.	10-12/16	7620	34
	10-12/17	8460	34
	10-13/17	7860	34
	12-14/20	9468	34
14 ft.	10-12/16	8890	40
	10-12/17	9870	40
	10-13/17	9170	40
16 ft.	12-14/20	11100	40
	10-12/16	10160	49
	10-12/17	11280	49
	10-13/17	10480	49
18 ft.	12-14/20	12580	49
	10-12/16	11430	54
	10-12/17	12690	54
	10-13/17	11790	54
20 ft.	12-14/20	14490	54
	10-12/16	12690	60
	10-12/17	14104	60
	10-13/17	13094	60
24 ft.	12-14/20	16100	60
	12-14/20	20200	71

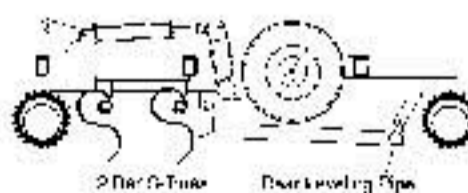
## FOLD-UP 2-BAR MODEL

Width	Tube Ring Size	Weight Lbs.	Number of S-Tines	Transporting Width
20 ft.	10-12/16	11500	39	14 ft.
	10-12/17	13167	39	14 ft.
	10-13/17	12667	39	14 ft.
	12-14/20	14667	39	14 ft.
22 ft.	10-12/16	12650	43	14 ft.
	10-12/17	14484	43	14 ft.
	10-13/17	13934	43	14 ft.
24 ft.	12-14/20	16134	43	14 ft.
	10-12/16	13800	47	14 ft.
	10-12/17	15800	47	14 ft.
	10-13/17	15200	47	14 ft.
28 ft.	12-14/20	17600	47	14 ft.
	10-12/16	15200	55	16 ft.
	10-12/17	17500	55	16 ft.
	10-13/17	16800	55	16 ft.
30 ft.	12-14/20	19600	55	16 ft.
	10-12/16	16350	59	16 ft.
	10-12/17	18817	59	16 ft.
	10-13/17	18067	59	16 ft.
12-14/20	21067	59	16 ft.	

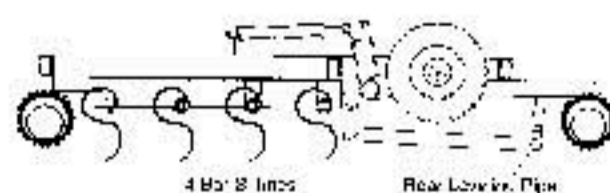
## FOLD-UP 4-BAR MODEL

Width	Tube Ring Size	Weight Lbs.	Number of S-Tines	Transporting Width
20 ft.	10-13/17	16000	60	15'10"
	12-14/20	19100	60	15'10"
22 ft.	10-13/17	16570	66	15'10"
	12-14/20	19900	66	15'10"
24 ft.	10-13/17	17140	72	15'10"
	12-14/20	20700	72	15'10"
26 ft.	10-13/17	19120	78	17'10"
	12-14/20	23100	78	17'10"
28 ft.	10-13/17	19700	84	17'10"
	12-14/20	24000	84	17'10"
30 ft.	10-13/17	20280	90	17'10"
	12-14/20	24800	90	17'10"

2-BAR TILL AN' BEDDER



4-BAR TILL AN' BEDDER



**T. G. SCHMEISER CO., INC.**

1-800-288-8128 • www.tgschmeiser.com

